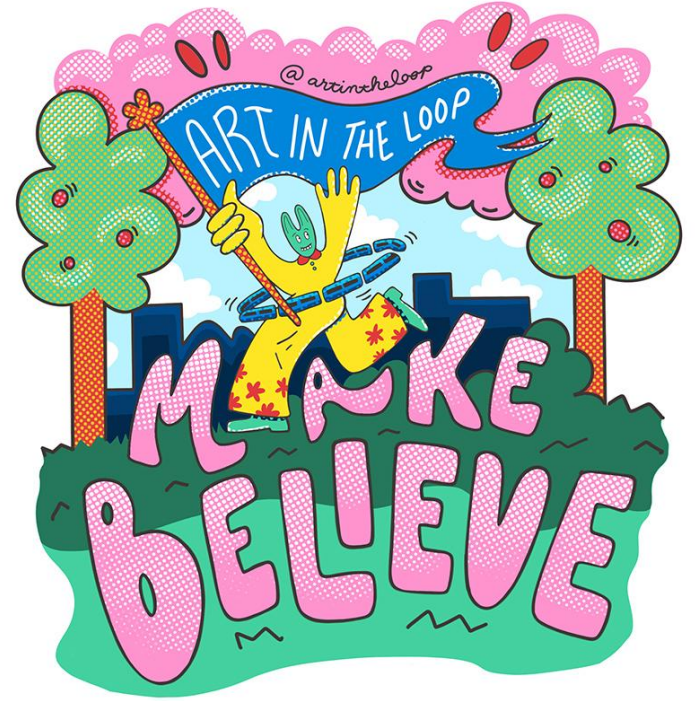




# Artist Concepts



2019 theme artwork by Nika Winn

# Art on the Line: KC Streetcar

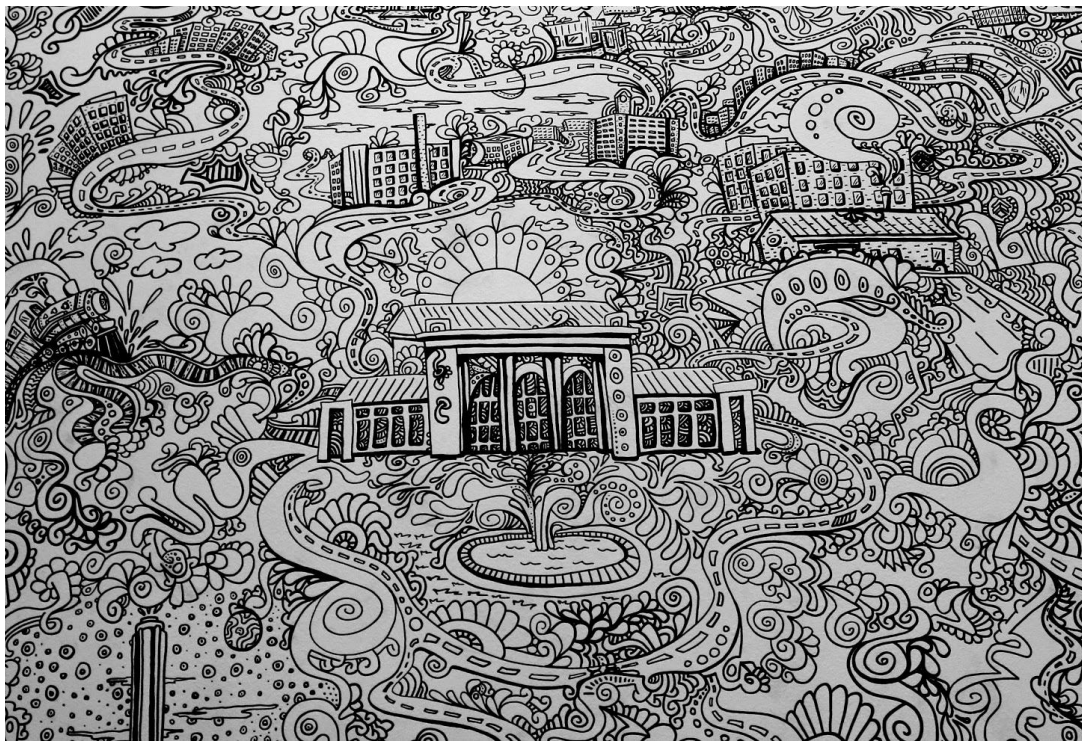


The microcosmos of insects is brought into the macrocosmos of downtown through metamorphosing KC Streetcar, a city icon, into a ready-made animatronic monument depicting the bold-looking Kansas City native, the Monarch Butterfly Caterpillar.

Christina Bereolos & Amanda Gehin  
*Macrocosmos Caterpillar: Monarch Streetcar*



# Art on the Line: KC Streetcar

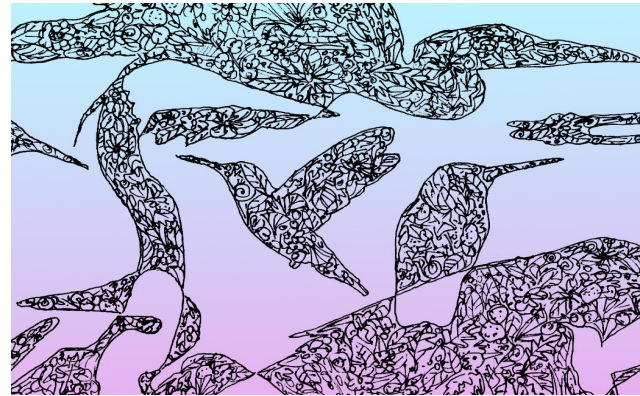


**Doodle KC** will be an immersive doodle experience at the KC Streetcar Union Station Stop - welcoming bystanders to view the Kansas City they know and love through a fresh lens. **Doodle KC** consists of a labyrinth of doodles that form a map-like image of Kansas City, incorporating all of the major architectural landmarks and iconic imagery that define the past, present, and future of this Midwestern destination.

Evan Brown, *The Doodle Stop* (Union Station Stop)



# Art on the Line: KC Streetcar



In a world such as Lewis Carroll's *Alice in Wonderland*, birds might not be of feathers and fluff, but something else altogether, let's say, lace doilies with avian aspirations. Near and far, ***Herons & Hummingbirds Cross the Road*** is here to help you on this flight of fancy, so Make/Believe and bon voyage.

Rachelle Gardner-Roe, *Herons & Hummingbirds Cross the Road* (Kauffman NB)

# Art on the Line: KC Streetcar



***public<sup>2</sup>*** is a mixed reality, geolocated performance taking place at three KC Streetcar stops. Choreographer Jane Gotch in collaboration with videographer Ian Garrett will create a site-specific virtual reality dance at each stop, and one culminating live performance. ***public<sup>2</sup>*** reimagines what “public space” is, and how it is created and accessed within a city.

Jane Gotch, *public<sup>2</sup>* (Mixed Reality Dance Performance, Union Station, Library and River Market West Stops)



# Art on the Line: KC Streetcar



Amanda K. Guerra, *Earth Bound* (North Loop)



***Earth Bound*** is a large scale landscape photograph on the Streetcar shelter's glass. The sky, land, and water captured in the photograph will give the viewer an opportunity to gain a sense of calm while breaking from a busy commuter life.

# Art on the Line: KC Streetcar



Wanting to make photography more interactive Jennings uses augmented reality (AR) to bring her photography to life using video. **Streetcar Zen** gives people the ability to take a moment and view the world through the photographer's lens. She created the trigger image and the embedded video then imported it to a rendering software to create the final works.

Angie Jennings, *Streetcar Zen* (River Market West)



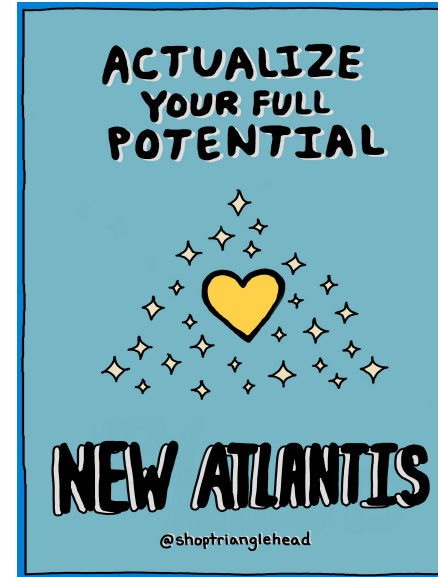
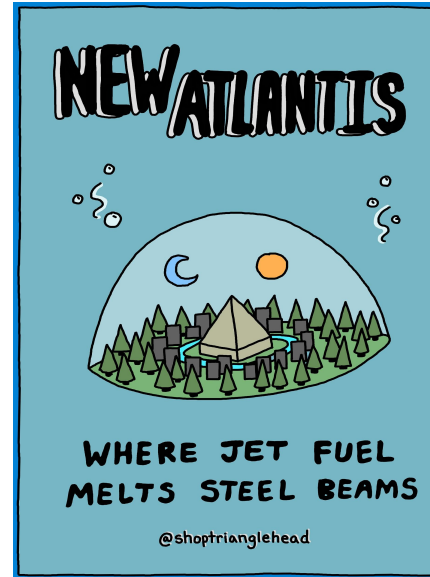
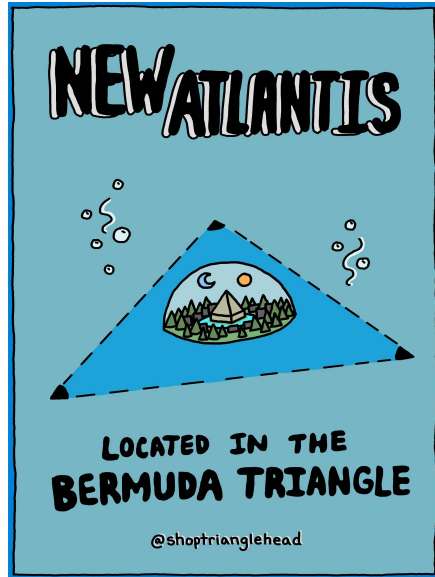
# Art on the Line: KC Streetcar



**Abuela** – is an interactive performance that brings **Abuela**, a life-sized puppet to the KC Streetcar. She is an elderly, indigenous grandmother from the Andes mountains who doesn't speak, but communicates with her eyes, her expressions, her body language. Part human, part foam and latex, **Abuela** is on an adventure in downtown Kansas City. Pedestrians and riders on the streetcar become complicit in her world, as **Abuela** seeks honest interactions like helping her on and off the streetcar, across the street, or perhaps even a dance partner for an Andean jig.

Karen Lisondra, *Abuela* (Performance, June 28, onboard KC Streetcar)

# Art on the Line: KC Streetcar



Evan Maddox, *New Atlantean Tourism Posters*  
(Crossroads SB)

The New Atlantean Department of Tourism will engage the downtown community at KC Streetcar stops, by presenting 8 questionably fictitious posters to the various destinations in New Atlantis. At first glance the posters will blend into the apparently normalized barrage of street advertising.



# Art on the Line: KC Streetcar

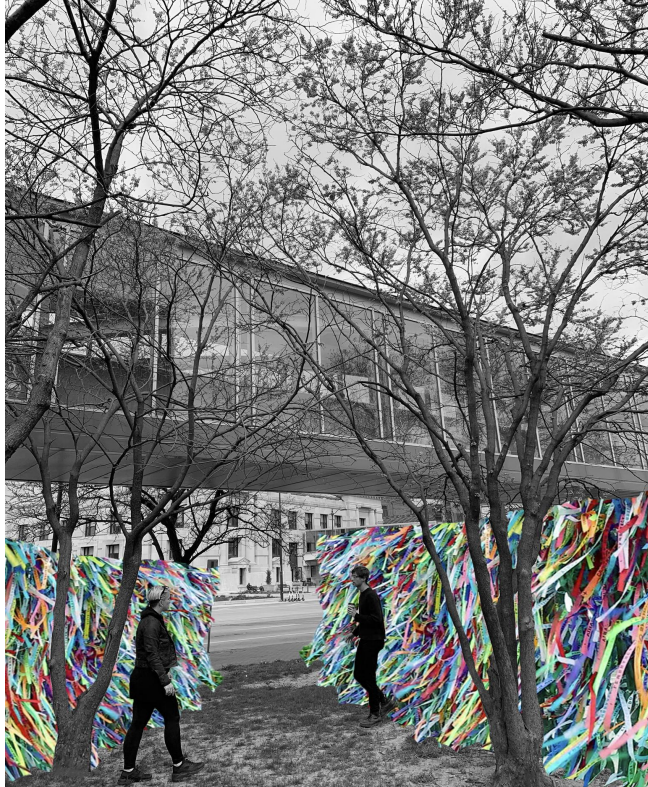


The show combines the poetry of Sheri Purpose Hall and the music of Willie Wonka and the Chocolate Factory. This suite will be delivered in a variety of styles with musical accompaniment by the live band highlighting its multiple highs and lows which work to re-envision our current state as a nation and city through poetry.

Our world can be as smooth as chocolate and sweet as candy; all we have to do is believe, and all that is in our pure imagination will become reality.

Sheri Purpose Hall, *A Wonka-riffic Trip*  
(Performance, Sep. 7, Union Station Streetcar Stop)

# Art in the Park: Washington Square Park



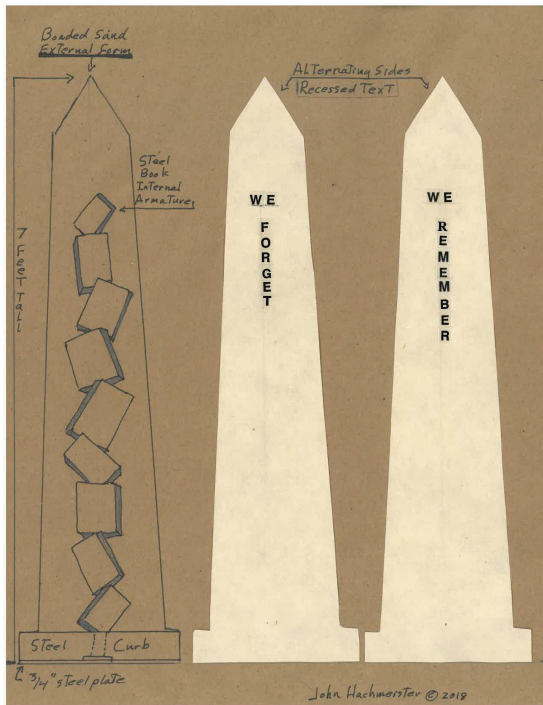
Ari Fish, *Tact*



***Tact*** is an interactive large scale installation in focusing on community interaction, call to action, prayer ritual, and the idea of sacred space. Referencing many sacred sites across the nation and alongside American highways, chain link fencing surrounds a cluster of redbud trees in the park with each fence being covered by ribbons and objects of ritual and prayer by visitors over the span of six months.



# Art in the Park: Washington Square Park



***We Remember/We Forget*** is a monument to the fault lines in our personal and collective memories. Those faults are in how we choose to remember, how we alter memories, and what we either chose to forget or let fade away due to indifference. This artwork is created by bonding sand collected from the Kaw River. The structure made with this sand is designed to slowly dissolve in the rain. The erosion will reveal an inner artwork of steel fabricated books.

John Hachmeister, *We Remember, We Forget*

# Art in the Park: Washington Square Park



Alonzo Ortega, *Endless*

***Endless*** is a concept that invites the theme of Make/Believe into a playful, immersive mirage. Reflective stainless steel planks will be placed strategically in the ground to give the illusion that mirrors are growing and unsupported. These mirrors allow us to perceive and place ourselves in a world in which we create, a world of make-believe and its intent is to bring the public and the city to interact with them as they already do.

# Art in the Park: Washington Square Park



During this live performance, audience members are invited to witness the evolution of inter-relationship and what is make-believe between two people. This performance is birthed from a vision where the music of Arsenia culls the performance space and Osborne's movements are informed by the nature's response and stirring echoes of the music

Jade Osborne, Calvin Arsenia, Nate Bogert, *INTER RELATION>SHIP*  
(Performance, June 19)



# Art in the Park: Washington Square Park



***Trans/Portal*** is a one time, all-ages interdisciplinary electronic exhibition and dance party; a tiny popup festival merging the magical with the mundane, the technological with the natural, set against the backdrop of the colorful Kansas City skyline.

UNTUCK, *Trans/Portal*, Performance (Sat., August 17, Time TBD.; Rain Date 8/24)

# Art at the Library: Kansas City Public Library



***When 2 Worlds Meet*** is an installation-work that brings awareness to the boundaries we create because of differences. During the performance the two artists share their insight with one another through their unique dance backgrounds, hip-hop and contemporary dance, in order to conquer adversities. Revealing that boundaries based on differences is all make-believe.

## Kick Off Event - Wednesday, June 5, 6 p.m.

- Tristian Griffin & SugEasy, *When 2 Worlds Meet*
- Introduction of 2019 Artists
- Comments from Tony Jones CBE, Nerman Family President of the Kansas City Art Institute

# Art in the Loop Streetcar Summer Music Series

Locations	Performance Dates	Time
<b>KC Streetcar Stops</b> and/or on-board Streetcar Vehicle	Thursdays: June 6 - August 1 <i>(No performance the week of July 1)</i>	5:00 p.m. - 7:00 p.m.
<b>Art in the Loop - Kick-off Event</b>	Wednesday, June 5	6:00 p.m.
<b>816 Day Celebration</b>	August 16	TBD
<b>Art in the Loop - Closing Reception</b>	Wednesday, November 6	6:00 p.m. to 8:00 p.m.



# Schedule of Events

Event	Date	Location
Kick-Off Reception	Wed., Jun. 5, 6 p.m.	KC Public Library - Central
Streetcar Sounds Music Series	Thurs., Jun. 6 - Aug 1, 5-7 p.m. + 816 Day	KC Streetcar (Onboard/at Stops)
INTER RELATION>SHIP	Wed., Jun. 19, 7 p.m.	Washington Square Park
Streetcar Art Crawl (1)	Sat., Jun. 22, 2-4 p.m.	Starting/Ending Points TBD
Abuela Rides KC Streetcar	Fri., Jun. 28, 11:30-1:30	Onboard KC Streetcar (Union Station)
Streetcar Art Crawl (2)	Sun., Jul. 13, 2-4 p.m.	Starting/Ending Points TBD
Trans/Portal	Sat., Aug 17, Time TBD	Washington Square Park
Public <sup>2</sup>	Sat., Aug. 24, 3 p.m.	River Market West Stop
Wonka-riffic Trip	Sat. Sep. 7, 7 p.m.	Union Station Stop
Closing Reception	Wed., Nov. 6, 6 p.m.	KC Public Library - Central

# 2019 Art in the Loop Supporters

as of 4/23/19



CONFLUENT



Richard J. Stern  
Foundation for the Arts

KCAI



BNIM Architects  
Doug & Terri Curran  
Chris Karson  
Ann J. & David Thurston